

eVisual Console for eSeries is a Windows® application that provides a graphical user interface for the eSeries System.

Facility floor plans along with eSeries functions can be displayed on a PC screen, providing a visual overview of the facility at a glance. Operations are simplified through the use of Navigation and Action Tool Bars.

Icons are positioned on floor plans showing the locations of intercom stations, paging zones, and devices. Voice communications to selected locations is as easy as clicking on an icon and speaking into a handset.

Interactive icons change color depending on their states, providing intuitive feedback to the user throughout an operation.

Integration with video provides the ability to view live streams from IP cameras. This provides the ability for a call to be initiated from eVisual Console location/computer to a station and provide a view via the IP camera of the station location.

An incoming call from a station, when answered from eVisual Console, can automatically bring up the camera view of the station location allowing the operator to view the caller.

On-Screen Notifications

eVisual Console integrates with eSeries Fault Monitoring. In the event of a field device fault, trouble tones sound and the appearance of trouble icons draw attention to the fault condition. eSeries devices are monitored for network connectivity, line faults, and operability.

DWConnect Notifications

eVisual Console integrates with DWConnect, providing the capability to automatically send SMS messages, generate emails and distribute PC pop-up messages.

These notifications can be initiated from the eVisual Console screen, eConsole, PBX phones, push buttons, as well as from emergency call stations throughout a facility.



On-Screen Notifications

eVisual Console integrates with eSeries Fault Monitoring. In the event of a field device fault, trouble tones sound and the appearance of trouble icons draw attention to the fault condition. eSeries devices are monitored for network connectivity, line faults, and operability.

DWConnect Notifications

eVisual Console integrates with DWConnect, providing the capability to automatically send SMS messages, generate emails and distribute PC pop-up messages.

These notifications can be initiated from the eVisual Console screen, eConsole, PBX phones, push buttons, as well as from emergency call stations throughout a facility.

A composite background image featuring a city skyline with tall buildings and a street view with cars and pedestrians. The image is used as a backdrop for the presentation slides.

On-Screen Notifications

A screenshot of the Reston Offices Visual Console for eSeries. The interface shows a 3D rack view of server units with various status icons. Three circular callouts highlight specific icons: a server unit, an Internet Radio, and a phone labeled 'eConsole 12322'.

eVisual Console integrates with eSeries Fault Monitoring. In the event of a field device fault, trouble tones sound and the appearance of trouble icons draw attention to the fault condition. eSeries devices are monitored for network connectivity, line faults, and operability.

DWConnect Notifications

eVisual Console integrates with DWConnect, providing the capability to automatically send SMS messages, generate emails and distribute PC pop-up messages.

These notifications can be initiated from the eVisual Console screen, eConsole, PBX phones, push buttons, as well as from emergency call stations throughout a facility.

A screenshot of an Emergency Alert interface. The main window displays a red alert message: 'ALERT: Lockdown at Knicks Middle School initiated at 09:28 AM from Principal's Office Station. Please follow Lockdown procedure.' Below the message are buttons for 'ACKNOWLEDGE' and 'SNOOZE'. To the right, there is an 'Audio Options' section with play and stop buttons. A smartphone in the foreground shows a text message notification from 'DWConnect' with the same alert details.

On-Screen Notifications

eVisual Console integrates with eSeries Fault Monitoring. In the event of a field device fault, trouble tones sound and the appearance of trouble icons draw attention to the fault condition. eSeries devices are monitored for network connectivity, line faults, and operability.

DWConnect Notifications

eVisual Console integrates with DWConnect, providing the capability to automatically send SMS messages, generate emails and distribute PC pop-up messages.

These notifications can be initiated from the eVisual Console screen, eConsole, PBX phones, push buttons, as well as from emergency call stations throughout a facility.

On-Screen Notifications

eVisual Console integrates with eSeries Fault Monitoring. In the event of a field device fault, trouble tones sound and the appearance of trouble icons draw attention to the fault condition. eSeries devices are monitored for network connectivity, line faults, and operability.

DWConnect Notifications

eVisual Console integrates with DWConnect, providing the capability to automatically send SMS messages, generate emails and distribute PC pop-up messages.

These notifications can be initiated from the eVisual Console screen, eConsole, PBX phones, push buttons, as well as from emergency call stations throughout a facility.



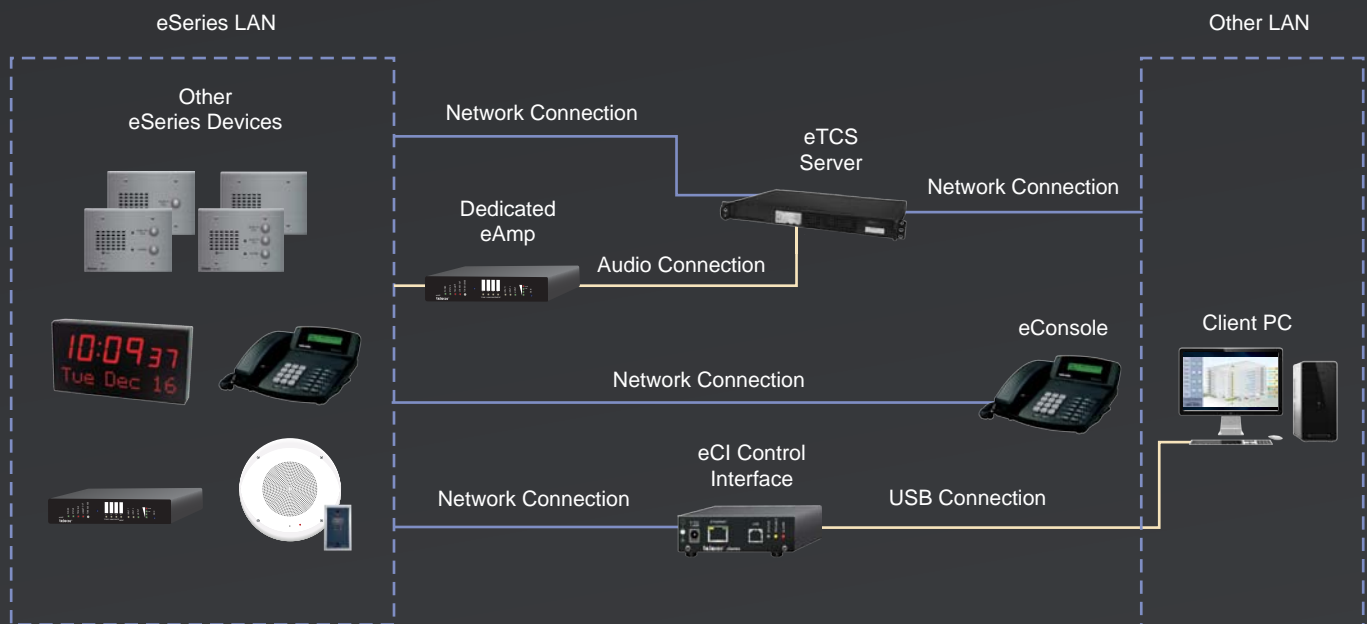
Single Users

The eVisual Console Software is installed onto one client PC or work station.

The eSeries Server hosts eVisual Console software components that are pre-installed at Telecor. The eSeries Server requires two network connections: one used to connect to the eSeries LAN while the other is used to connect to the same LAN as the Client PC. An audio connection to the eAmplifier provides the ability to transmit audio files to devices on the eSeries network.

The eAmplifier is dedicated for eVisual Console and hosts text message and audio files associated with audio announcements.

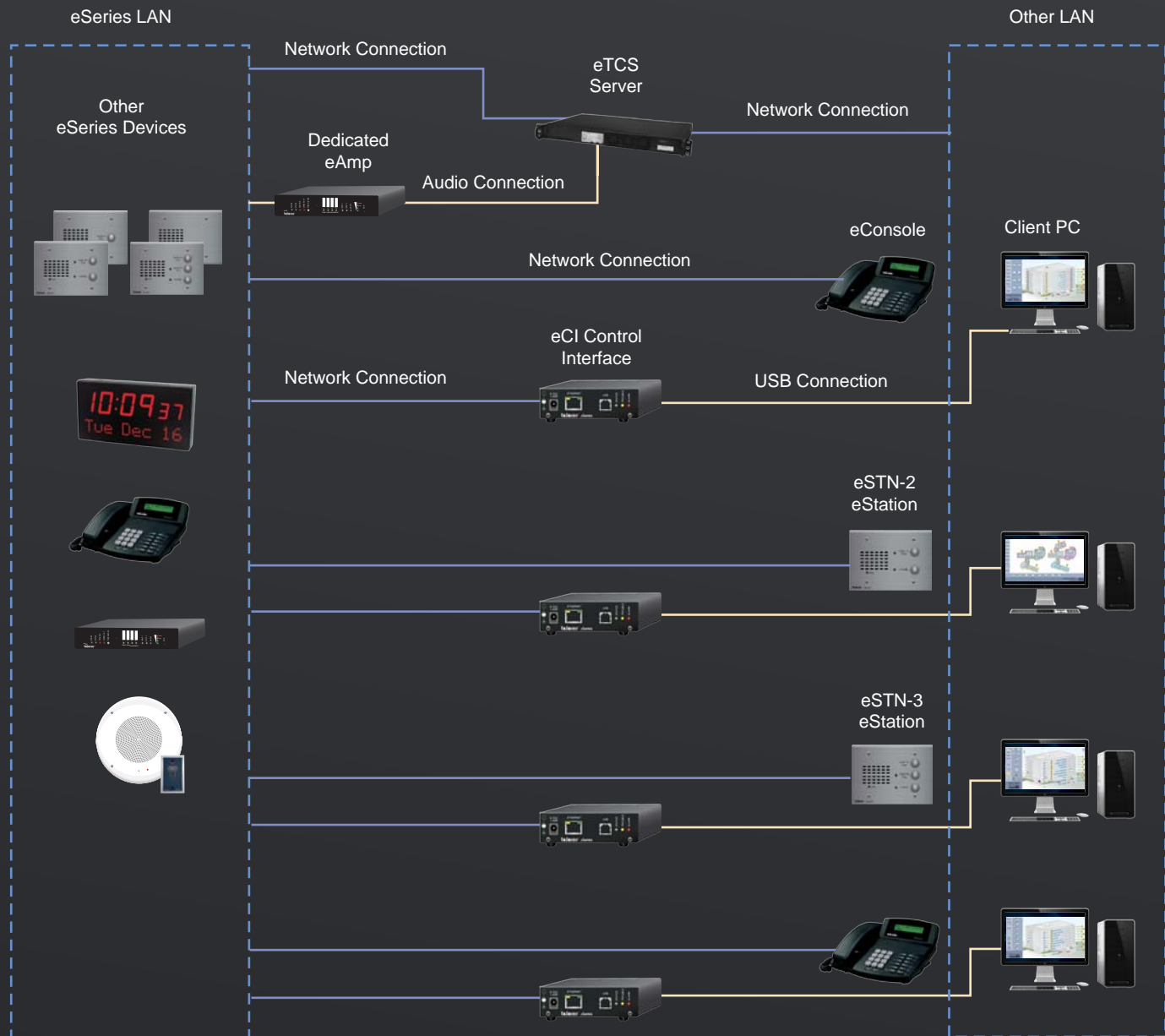
The Control Interface is dedicated for eVisual Console and provides the interface between the eSeries network and the client PC or work station.



eVisual Console for eSeries can be installed on multiple client PCs, allowing more than one user to interact with the eSeries devices.

Multiple Users

Installation of eVisual Console on additional client PCs requires the purchase of additional licences. Each client PC also requires its own Control Interface (eCI).



In the USA
2434 Jerauld Avenue, Niagara Falls, New York 14305
tel: (716) 285-8272 fax: (716) 285-8287

In Canada (Corporate)
6205 Kestrel Road, Mississauga, Ontario L5T 2A1
tel: (905) 564-0801 fax: (905) 564-0806

All product information subject to change without notice. Copyright © 2018 by Telecor Incorporated.
Telecor, the Telecor logo, eSeries, the eSeries logo, DWConnect and the DWconnect logo and eVisual Console are Registered Trademarks of Telecor Inc.



telecorTM
www.telecor.com

ETS-1911-Rev 0.0